

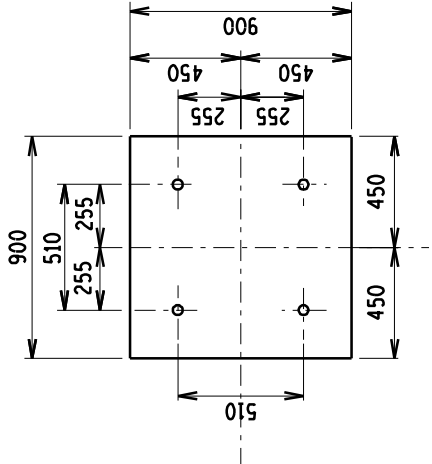
H.D.BOLT DETAIL (N.I.S.)

MASS OF ONE H.D.BOLT
COMPLETE WITH NUT
& WASHER = 2,4 kg

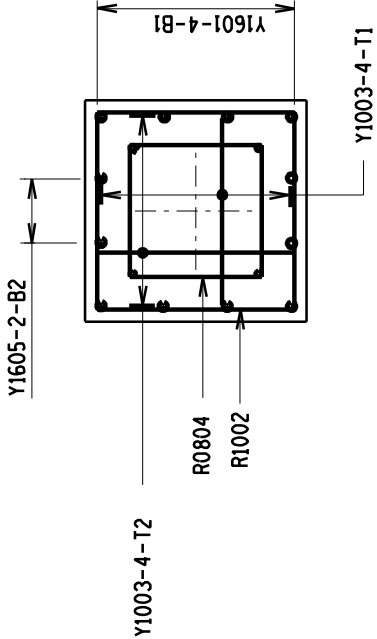
NOTES:

1. CONCRETE STRENGTH AT 28 DAYS/STONE SIZE: BLINDING = 15/19 FOUNDATIONS = 25/19
2. MIN. CONCRETE COVER TO REINFORCEMENT = 50 mm.
3. a.) H.D.BOLTS (GRADE 4.8) SUPPLIED BY CIVIL CONTRACTOR COMPLETE WITH NUTS AND WASHERS TO BE HOT DIPPED GALVANISED TO SABS ISO 1461. b.) THREADS OF NUTS TO BE OVER-CUT TO SABS ISO 1461 TO ALLOW FOR THICKNESS OF GALVANISING
4. FORMWORK TO EXTEND AT LEAST 150mm BELOW GROUND LEVEL.
5. ALL WELDING AND WELDING SYMBOLS TO S.A.B.S. 044
6. STEEL TEMPLATE TO BE USED FOR SETTING H.D.BOLTS
7. 30MPa FLOWABLE NON-SHRINK GROUT UNDER BASE PLATE ONLY IF REQUIRED
8. ALL TOP EDGES OF CONCRETE TO HAVE 20x20 CHAMFERS
9. ALL WORK TO BE IN ACCORDANCE WITH SABS 1200 SERIES SPECIFICATION
10. CONCRETE FINISH : TOP OF FOUNDATION – WOOD FLOAT FINISH
: SIDES – SMOOTH OFF SHUTTER FINISH
11. THESE FOUNDATIONS HAVE BEEN DESIGNED TO FOUND ON COMPETENT FOUNDING MATERIAL. IN ALL CASES COMPETENCY OF FOUNDING MATERIAL MUST BE ESTABLISHED BY A QUALIFIED GEOTECHNICAL ENGINEER

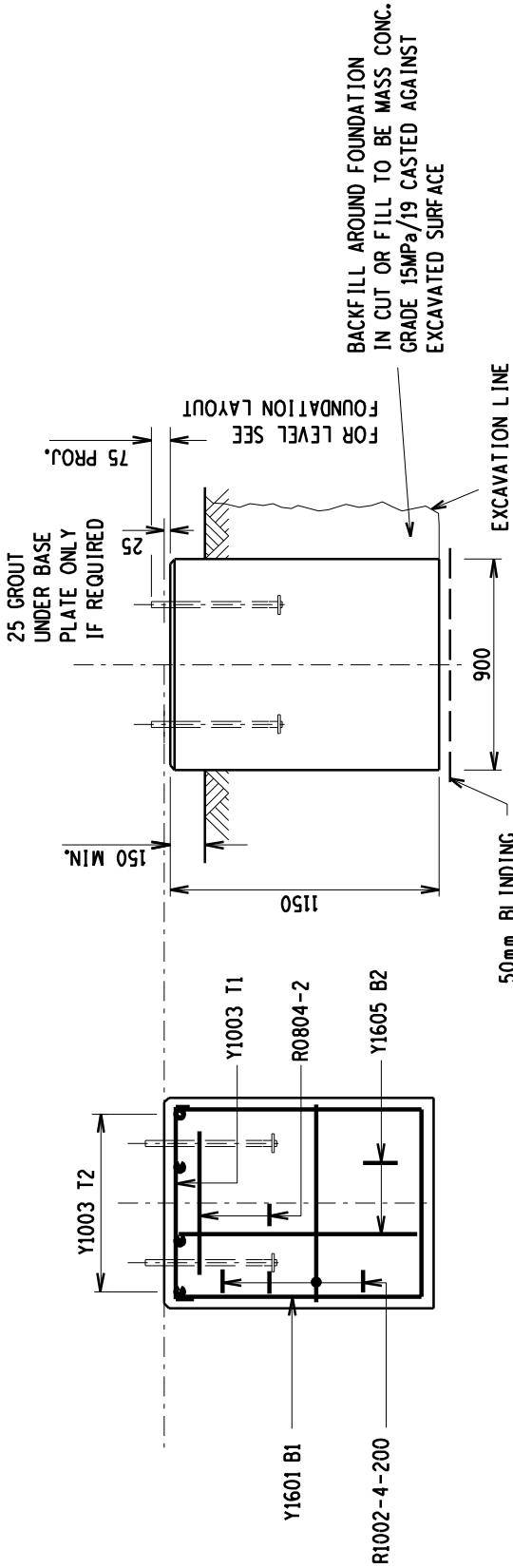
THIS FND PRE 1993
FOR PAD TYPE FND
SEE DRG 0.54/4358.
WAS 0.00/ 1993



PLAN



PLAN



SECTION A-A

ELEVATION

BACKFILL AROUND FOUNDATION
IN CUT OR FILL TO BE MASS CONC.
GRADE 15MPa/19 CASTED AGAINST
EXCAVATED SURFACE

ITEM AND No OFF	BARS						SHAPE CODE	STANDARD SHAPES BENDING DIMENSIONS mm				
	Y or R	DIA.	MK.	No OFF		CUTTING LENGTH mm		TOTAL LENGTH m				
				PER ITEM	TOTAL							
3 OFF.	Y 16	01		4	12	2800		1050	780			
	R 10	02		4	12	3400		800	800			
	Y 10	03		8	24	1050		780				
	R 08	04		2	6	2450		560	560			
	Y 16	05		2	6	2750		1030	780			

9	REINFORCEMENT ADDED	DUCS	DRN.	DUCS	17/0002
8	BACKFILL DETAIL ADDED	DUCS	DRN.	DUCS	17/0002
7	NOTES REVISED & CHAMFERS SHOWN	UCB	MADE	MADE	12/00
6	NOTE 1 REVISED	C.C.V.	H.G.L.	H.G.L.	5/07
5	POCKET & NOTE 5 REMOVED HB BOLT DETAILS REVISED	M.P.H.	S.A.L.H.A.C.B.	23/0006	
4	REBAR ON C&I NOTE 6 ADDED HB BOLT DETAIL REVISED	M.P.H.	L.D.	L.E.B.	14/0001/005
3	PROFILES & NOTE 1 ADDED	C.C.V.	G.C.E.	K.P.	21/0001/004
2	NOTE 2 REVISED	C.C.V.	P.J.G.	P.J.G.	24/0001/003
1	DIA. 24 HB BOLT CHANGED TO DIA. 25	C.C.V.	P.J.G.	P.J.G.	6/0001/002
0					300

REV	REVISION DESCRIPTION	BY	CHKD	AUTH	DATE
DESIGN APPROVED P.H.					
DATE 29/4/67					
DESIGN CHECKED M.D.T.					
DATE 29/4/67					
DRAWN BY DC 06 H					
DATE 21/4/67					
SCALE 1:500					
SHEET NUMBER					
REVISION					
9					

MEDIUM EQUIPMENT SUPPORT
FOUNDATION DETAILS

0.54/308

SCALE 1:500

LEVELS 1

8

7

6

5

4

3

2

1

AIL